

Day Dream

An Escape The Rat Race Narrow boat



Key Details

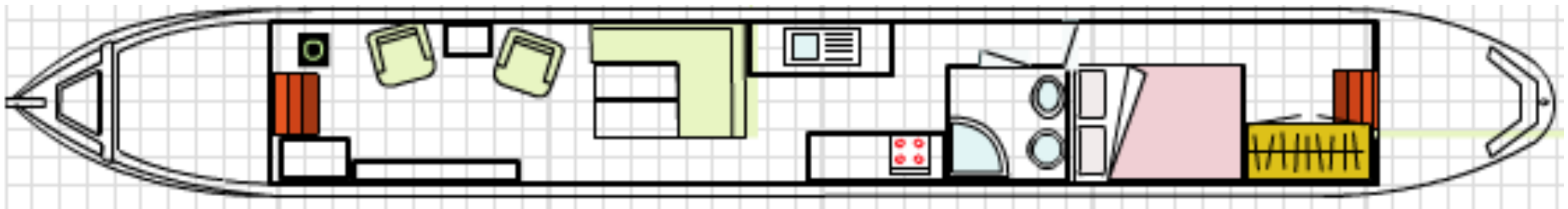
Day Dream is a 57ft narrowboat built in 2006.

She was made to a higher than normal ceiling height and so accommodates the taller male.

This has the added advantage of giving a light and airy interior a sense of extra space



Boat Layout



Comfortable
cratch area

Living area and
wood burner

Dining table or put-
you-up double

Kitchen

Bathroom

Fixed double bedroom

Cruiser Stern

Facilities

Day Dream has all the normal **“Escape The Rat Race”** facilities:

- a log burning stove, for warmth and to boil a kettle quickly;
- a fixed good size double bedroom;
- a second put you up double when needed;
- a nicely fitted kitchen with side hatches;
- a good sized shower room, incorporating a full size wash hand basin with a pump out toilet;
- It also has a full central heating system - driven either by the Vetus engine or by the dedicated central heating system boiler.

Equipment

A welcome bottle of wine awaits you on your “Escape”.

The boat is prepared fully equipped with crockery and cutlery for 4 people, utensils for all cooking.

We provide you with a British Waterways Map, mooring stakes and windlasses - to help you navigate the canal and river network across the UK.



The Living Area

This is the focal point of the boat, with space for a tv, and a multi fuel stove. There is plenty of room for sitting whilst cruising, or preparing food and chatting over a glass of wine,

The area exudes space and warmth from the wood.

A sofa futon provides a double bed for friends overnight. There is an option to put up a desk for more working space using a laptop or it can be left folded to allow you more space to move around the cabin.

There is also a full central heating system - driven either by the Vetus engine, when under power or by the dedicated central heating system boiler.

Kitchen Area

The kitchen area is adjacent to the living area, and has a good quality oven, grill and hob.

There is a fridge, a washing machine and a stainless steel sink.

There is a nice stretch of worksurface opposite the sink, and opening hatch doors.

Daydream is equipped with a bottle of wine to greet you on your escape, and with enough crockery and cutlery for four.





Bathroom

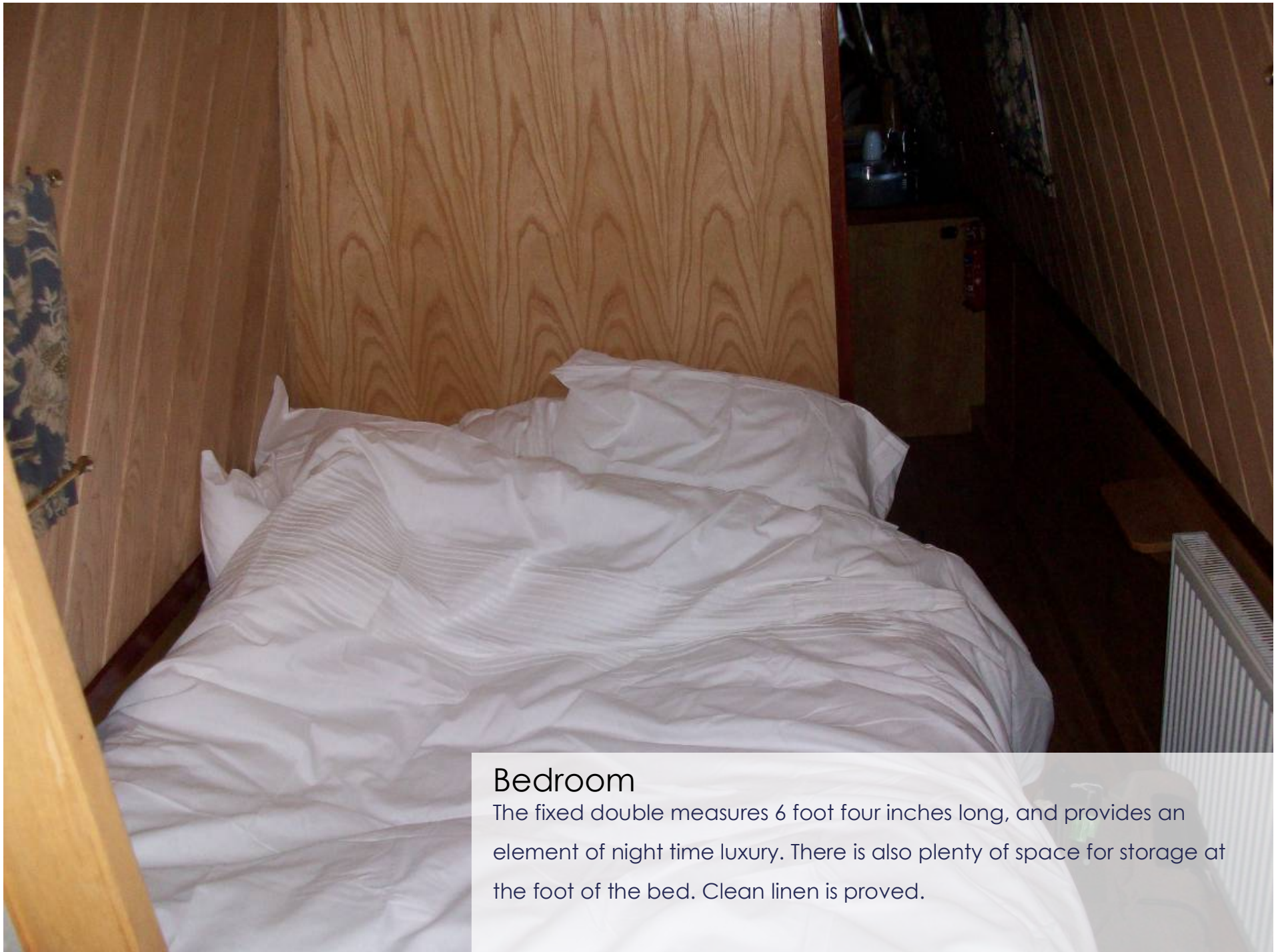
The bathroom has a full size shower, with full vinyl tiling and a shower tray.

Opposite the shower is a wash hand basin and a pump out lavatory.

There is also a heated towel rail.

The bathroom is enclosed as a complete good sized working space, with cupboards near the wash hand basin for those essential washroom items.





Bedroom

The fixed double measures 6 foot four inches long, and provides an element of night time luxury. There is also plenty of space for storage at the foot of the bed. Clean linen is proved.



Outside

The boat has a bow area under a cratch cover, providing outside space on a nice day, or it can be fastened on in the winter to provide a little more warmth and a dry area for logs.

At the stern, there's a nice area for sitting out when not on the move or for cruising with friends.

The stern houses a high quality vetus engine, easily accessible under floor.

Have a nice escape!



Security deposit required as per occupancy agreement

Please note that if this boat is available for you it is also available to others.

The boat is booked on receipt of the booking deposit.

This is a non returnable booking deposit if you withdraw for any reason.

It is fully returnable by me if I cant provide the boat for any reason.

On the day you step aboard, it changes to become your security deposit for the duration of the stay.

It is then fully returnable at the end subject to any deductions for damage, arrears or returning the boat in a poor condition

Escape the Rat Race

The Lawn
Dipford, Trull, TA37NR

T: 07935 232 058
E: alex@etr.co.uk
W: www.etr.co.uk