

Immanuel



Immanuel is a 50' Narrow Boat built by Evans and Son

Immanuel is fitted with a Vetus engine of 35 HP.

The main entrance is at the front of the boat leading into a living area followed by a kitchen with a passageway leading to the rear of the boat with a bathroom off to the side with shower and toilet and then on to the bedroom with a double bed and finally into the back cabin with stairs leading up to the back deck.



The rear deck showing steps down through the engine room to the bedroom



The living area with kitchen behind taken from the front door.



The Kitchen



The living area looking from the kitchen toward the front door.



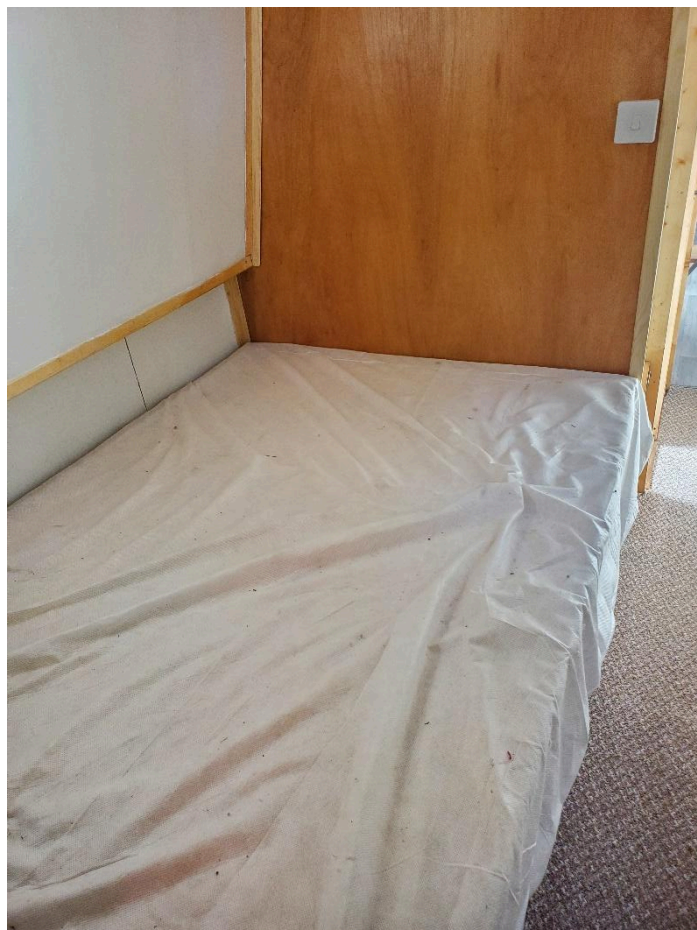
Shower



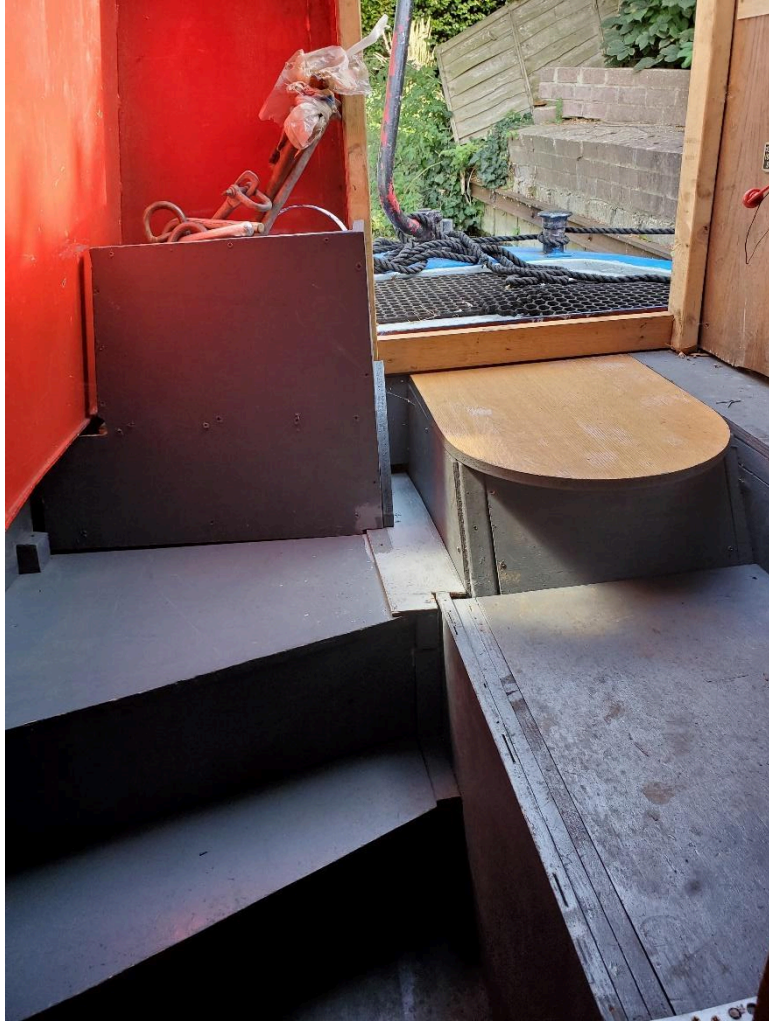
Wash basin and toilet.



The bedroom looking to the engine room



The bed



Steps in engine room leading up to back deck

Immanuel has a solid fuel stove with a back boiler connected to the radiator located in the bedroom ensuring that the bedroom is snug in the winter.

There is also a 240-volt supply from an inverter to power laptops and charge mobile phones.

The 12-volt system is backed up from a solar panel on the roof as well as being charged from the engine which has just been serviced. There is a separate starting battery to the leisure batteries used to charge lighting etc inside the boat.

There is plenty of storage space on the boat and the kitchen is well equipped.

Some final thoughts:

The boat is ideal for an extended cruise or as a liveaboard. . At present she does not have a futon – put u up as all our boats do, but one can be provided if required.

We can also equip her with a simple dining table and four chairs if you would like.

Please note that while we make every attempt to provide accurate brochures of our boats, items do get changed and upgraded in the normal course of looking after the boats and sometimes there are changes that have not been reflected in a brochure.

